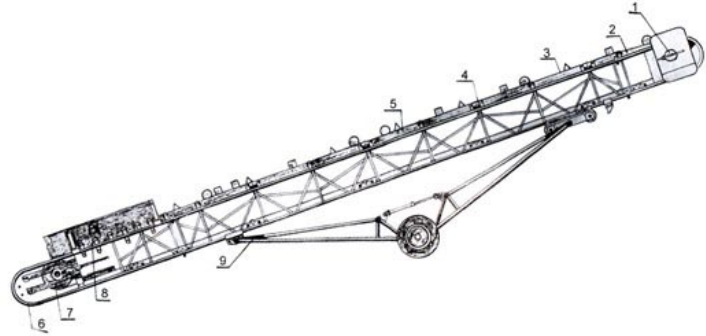


Model YD 94 Mobile Belt Conveyor

With the collaboration of the world's advanced technology, Model YD 94 Mobile Belt conveyor is characterized with stable performance, excellent mobility, high feeding efficiency and long life. Operated reasonably, there should be no spillage of material. It is the ideal mobile continuous feeding equipment.



Scope of usage

This model is suitable both for bulk material feeding and articles shifting. Mainly used at ports, shipyards, railway stations, coal staging, stores, construction plants, sand and gravel yards, farms and sanitary management, etc.

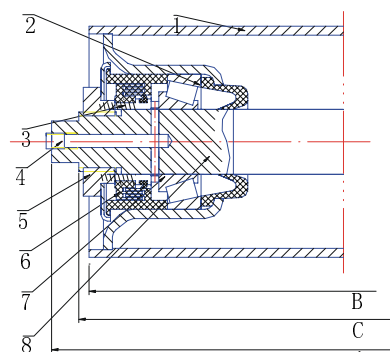
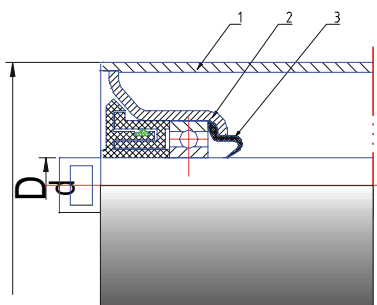


Description of the conveyor

Model BMR & BJR roller

Equipped with roller bearing series and unique labyrinth, BMR roller is designed for heavy duty, large bearing capacity, stable performance, extra-long life with less maintenance. It is used at the rear pulley impact area as impact rollers.

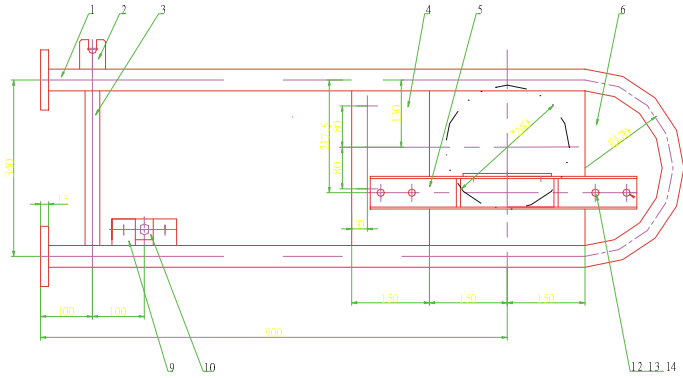
With the economic ball bearings, BJR roller is used for the rest of the conveyor.



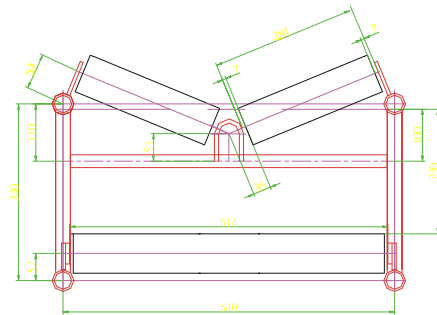
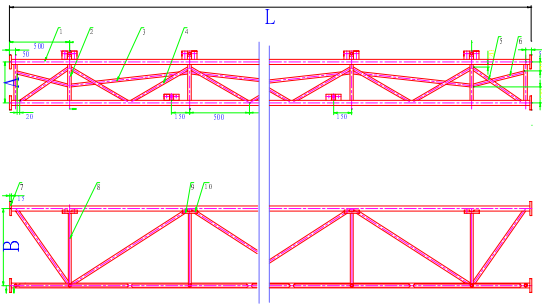


Modular design

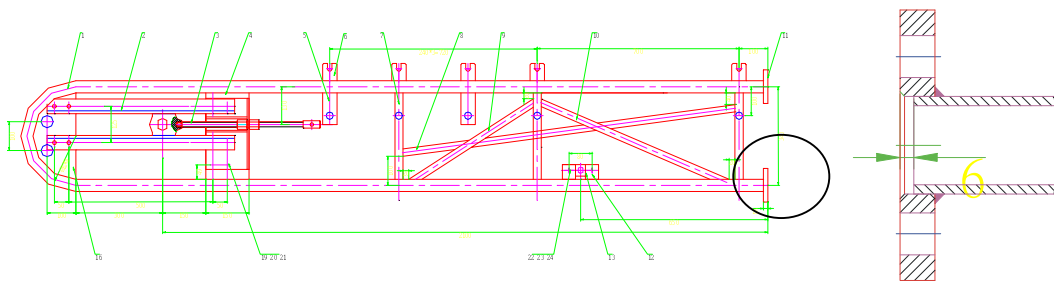
Feeding length varies by replacing truss between head and rear pulley. Meanwhile, the flanges on truss make assembly/disassembly easy and fast. The head pulley assembly is



900mm in effective length. The middle truss comes in 3, 5, 6, 7m in standard lengths. The

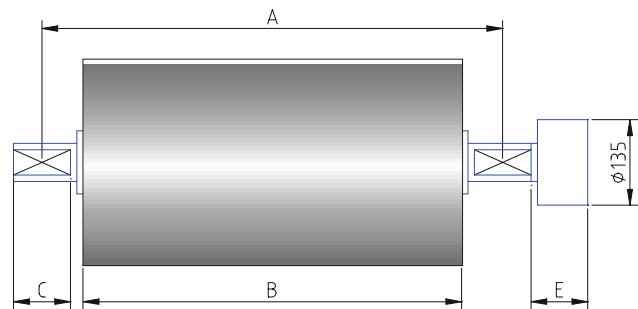


tail pulley assembly's effective length is 2100mm.

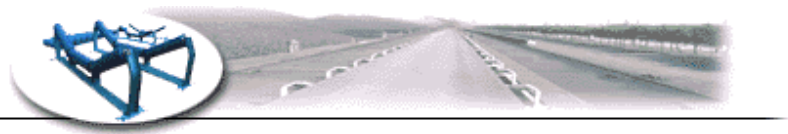


Pulley - drive system

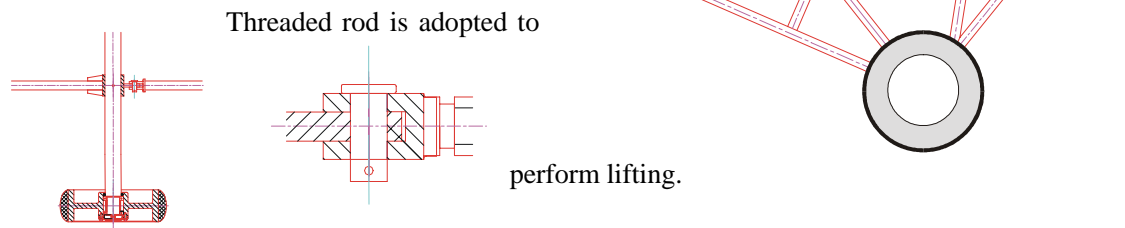
In conform to ISO standard, the Model TJ series manufactured by Tianjin Yueji co., Ltd with Joki technology, Denmark, give the conveyor powerful strength and long stable working hours.



Item	Details (example: B=800mm)				
Body length (m)	6	8	10	15	21
Diameter (mm)	323	323	323	403	505



Lifting system



Threaded rod is adopted to

perform lifting.

The travel wheels are made of cast steel with rubber on top, ready for tough site path. Wheel assembly can be disassembled into 2 main parts of 2300mm long for each.

Conveyor Belt

Normal Fabric belt is used for medium length feeding of bulk material such as coal, sand, gravel, etc. Connection of belt can be accomplished by way of vulcanization, cold bond or metal clamps.

Specifications

Body length (m)	6			8			10			15			21		
Belt width (mm)	500	650	800	500	650	800	500	650	800	500	650	800	500	650	800
Power (kw)	3			3	4	3			5	4	6	4			8
Belt speed (m/s)	1.6														
Flow (t/h)	60-150														
Lift height (m)	2.28			2.90			3.52			5.07			6.92		
Inclination	18°														
Thread travel limit (mm)	300														
Body width(mm)	680	790	940	680	790	940	680	790	940	680	790	940	680	790	940

Ordering code

YD94 - B x L - P (C)

Which bears the following definition:

Item	Definition	Item	Definition
YD94	Model YD94 mobile belt conveyor	P	Flat roller assembly
B	Belt width	(c)	Troughing roller assembly
L	Body length		

Note: Property of material to be handled shall be advised for orders.

* Specifications are subject to change without notice.

Contact information

Tangshan BeiHua Electro-mechanical Engineering Co., Ltd

No. 39, Jianshebei Road, Tangshan - 063000

Hebei, P. R. China

<http://www.beihua.com.cn>

info@beihua.com.cn

Tel: +86 315 2095835

Fax: +86 315 2039807